

CASE STUDY #1

Packer Isolation Test



PACKER ISOLATION TEST CASE #1
 Case 1: Casing pressure is greater than 1400 kPa upon arrival

Company Golden Company Ltd.
 Field Name Black Gold
 Well Location 100/00-00-000-00 WOM/00
 Date xxxx-08-27

Pressure Truck Company Pressure Company
 Logger serial # P704
 H2S Content NIL
 Pass or Fail Pass

Casing Pressure (kPa) = 3721 Tubing Pressure (kPa) = 952 Well Type (see note A) = 1

Bled pressure to 0.0 kPa and recovered 79.0 litres of diesel.

Let well stabilize at 0.0 kPa for 15 minutes. (minimum of 5 minutes)

Started a 24 hour pressure build up on xxxx-08-27 at 10:13:00 (date & time) (See Graph)

Initial pressure at start of build up was 0 kPa.

Finished a 24 hour pressure build up on xxxx-08-28 at 10:54:40 (date & time) (See Graph)

Final Pressure was 24.0 kPa. (less than 3% is a pass)

Comments _____

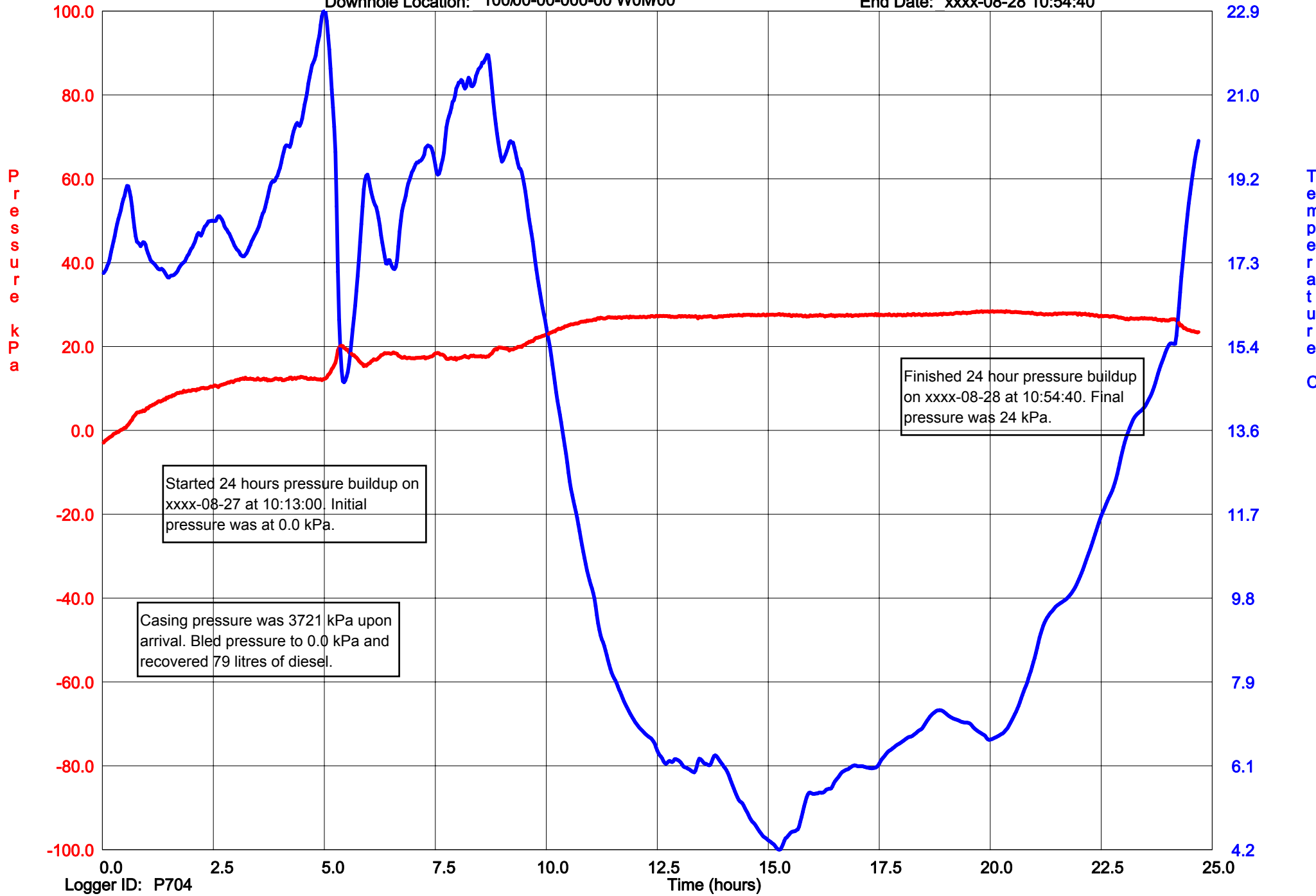
Please Note: All class 1 & 2 wells must be pressure tested to 1400 kPa **EXCEPT** class 1A disposal wells which must be pressured up to 7000 kPa.

NOTE A Well Type		NOTE B Fluid Recovery Type		
1. WATER INJECTION/DISPOSAL (OPERATING)	4. H2S > 5% (SHUT-IN SUSPENDED)	1. GAS (SWEET)	4. WATER (FRESH)	8. OTHER (SPECIFY)
2. WATER INJECTION/DISPOSAL (SHUT-IN/SUSPENDED)	5. GAS INJECTION	2. GAS (SOUR)	5. WATER (SALT)	
3. H2S > 5% (PRODUCING)	6. OTHER (SPECIFY)	3. OIL	7. INHIBITED WATER	

Pressure Plot

Company: Golden Company Ltd.
 Field: PIT - BU
 Surface Location: 00-00-000-00 WOM
 Downhole Location: 10000-00-000-00 WOM00

Start Date: xxxx-08-27 10:13:00
 End Date: xxxx-08-28 10:54:40



Started 24 hours pressure buildup on xxxx-08-27 at 10:13:00. Initial pressure was at 0.0 kPa.

Casing pressure was 3721 kPa upon arrival. Bled pressure to 0.0 kPa and recovered 79 litres of diesel.

Finished 24 hour pressure buildup on xxxx-08-28 at 10:54:40. Final pressure was 24 kPa.

CASE STUDY #2

Packer Isolation Test



PACKER ISOLATION TEST CASE #2
 Case 2: Casing pressure is between 1 and 1400 kPa upon arrival

Company Golden Company Ltd
 Field Name Black Gold
 Well Location 100/00-00-000-00 WOM/00
 Date xxxx-07-20

Pressure Truck Company _____
 Logger serial # & Filename P107
 H2S Content NIL
 Pass or Fail Pass

Casing Pressure (kPa) = 51 Tubing Pressure (kPa) = -5.7 Well Type (see note A) = 1

Bled Casing Pressure to 0.0 kPa in 0.5 minutes.
 Recovered 0.0 litres of _____ fluid.
 Injected 5.0 litres of diesel fluid pressuring annulus up to 2509.0 kPa.
 Let well stabilize for 24.0 minutes. (minimum 15 minutes)
 Started 15 minutes of pressure monitoring at 13:54:00 hrs:min:sec at 2003.0 kPa. (See Graph #1)
 Finished 15 minutes of pressure monitoring at 14:09:00 hrs:min:sec at 1969.0 kPa.
 Change in pressure was 34.0 kPa. (less than 3% is a pass)
 Bled pressure to 0.0 kPa and recovered 2 litres of diesel fluid in 5 minutes.
 Let well stabilize at 0.0 kPa for 15 minutes (minimum 5 minutes)
 Started a 24 hour build up on xxxx-07-20 at 14:28:10 (date & time) (See Graph#2)
 Initial pressure at start of build up was 7.0 kPa.
 Finished a 24 hour build up on xxxx-07-21 at 14:28:10 (date & time)
 Final Pressure was 13.0 kPa. (less than 3% is a pass)

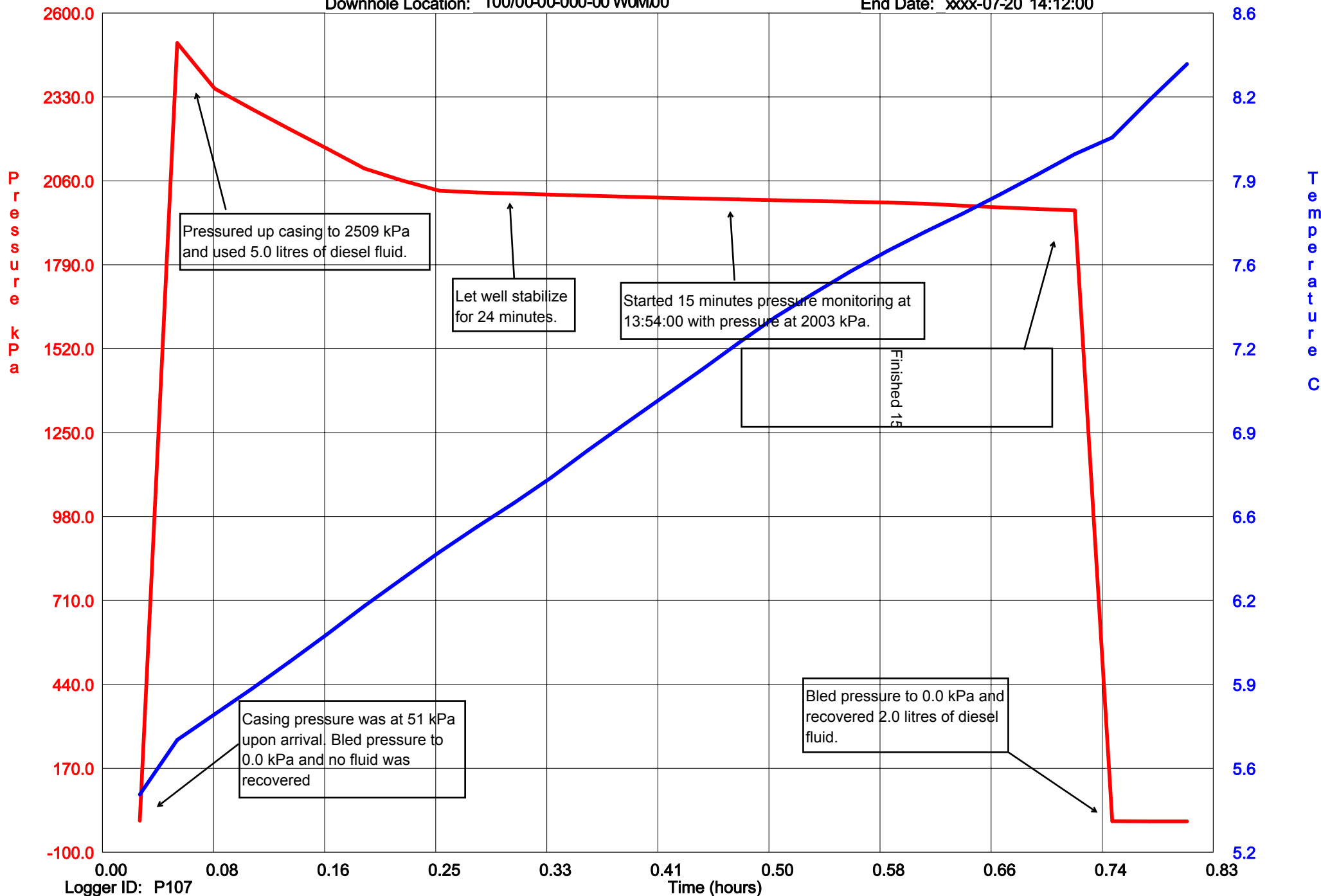
Comments _____

Please Note: All class 1 & 2 wells must be pressure tested to 1400 kPa EXCEPT class 1A disposal wells which must be pressured up to 7000 kPa.

NOTE A Well Type		NOTE B Fluid Recovery Type		
1. WATER INJECTION/DISPOSAL (OPERATING)	4. H2S > 5% (SHUT-IN SUSPENDED)	1. GAS (SWEET)	4. WATER (FRESH)	8. OTHER (SPECIFY)
2. WATER INJECTION/DISPOSAL (SHUT-IN/SUSPENDED)	5. GAS INJECTION	2. GAS (SOUR)	5. WATER (SALT)	
3. H2S > 5% (PRODUCING)	6. OTHER (SPECIFY)	3. OIL	7. INHIBITED WATER	

Pressure Plot
 Company: Golden Company Ltd.
 Field: Packer Isolation Test (graph #1)
 Surface Location: 00-00-000-00 WOM
 Downhole Location: 100/00-00-000-00 WOM00

Start Date: xxxx-07-20 13:22:30
 End Date: xxxx-07-20 14:12:00

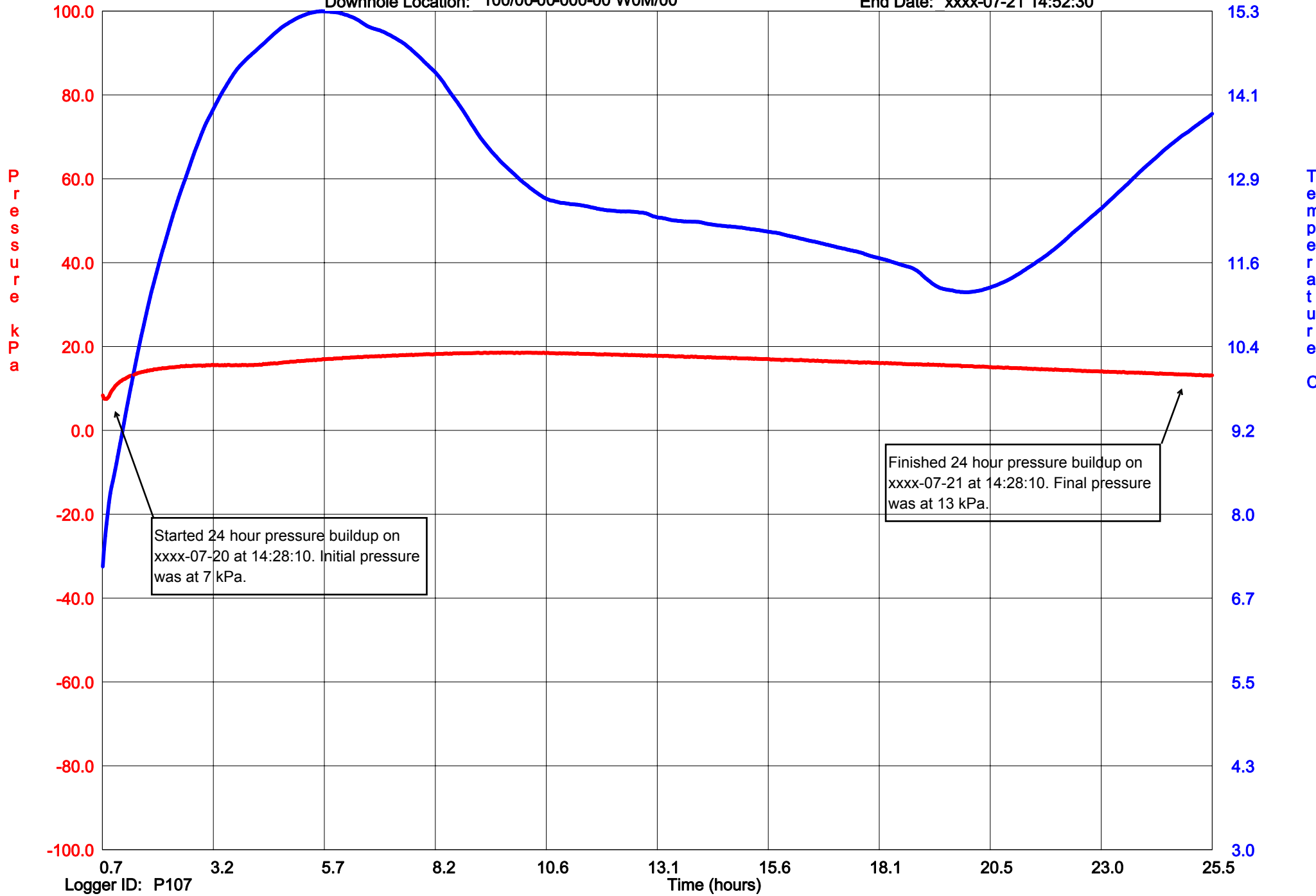


Pressure Plot

Company: Golden Company Ltd.
 Field: Packer Isolation Test (graph #2)

Surface Location: 00-00-000-00 WOM
 Downhole Location: 100/00-00-000-00 WOM/00

Start Date: xxxx-07-20 14:28:10
 End Date: xxxx-07-21 14:52:30



Started 24 hour pressure buildup on xxxx-07-20 at 14:28:10. Initial pressure was at 7 kPa.

Finished 24 hour pressure buildup on xxxx-07-21 at 14:28:10. Final pressure was at 13 kPa.

CASE STUDY #3

Packer Isolation Test



PACKER ISOLATION TEST CASE #3
 Case 3: Casing pressure 0 kPa upon arrival

Company Golden Company Ltd.
 Field Name Black Gold
 Well Location 100/00-00-000-00 WOM/00
 Date xxxx-06-24

Pressure Truck Company _____
 Logger serial # & Filename P642
 H2S Content 0
 Pass or Fail Pass

Casing Pressure (kPa) = -2 Tubing Pressure (kPa) = -77 Well Type (see note A) = 1

Injected 340.0 litres of Diesel/Inhibited Water mixture pressuring annulus up to 1897 kPa.

Let well stabilize for 15.0 minutes. (minimum 15 minutes)

Started 15 minutes of pressure monitoring at 14:05:00 hrs:min:sec at 1870 kPa. (See Graph)

Finished 15 minutes of pressure monitoring at 14:20:00 hrs:min:sec at 1877 kPa.

Change in pressure was 7 kPa. (less than 3% in a pass)

Bled pressure to 0.0 kPa and recovered 45.0 litres of Diese & Inhibited water mixture.

Comments _____

Please Note: All class 1 & 2 wells must be pressure tested to 1400 kPa **EXCEPT** class 1A disposal wells which must be pressured up to 7000 kPa.

NOTE A Well Type		NOTE B Fluid Recovery Type		
1. WATER INJECTION/DISPOSAL (OPERATING)	4. H2S > 5% (SHUT-IN SUSPENDED)	1. GAS (SWEET)	4. WATER (FRESH)	8. OTHER (SPECIFY)
2. WATER INJECTION/DISPOSAL (SHUT-IN/SUSPENDED)	5. GAS INJECTION	2. GAS (SOUR)	5. WATER (SALT)	
3. H2S > 5% (PRODUCING)	6. OTHER (SPECIFY)	3. OIL	7. INHIBITED WATER	

Casing Pressure Plot
 Company: Golden Company Ltd.
 Field: PIT-Pressure Monitoring
 Surface Location: 00-00-000-00 WOM
 Downhole Location: 100/00-00-000-00 WOMW00

Start Date: xxxx-06-24 13:39:45
 End Date: xxxx-06-24 14:39:05

